



Sweet Tartz

PT6028 GH Trimmed Flower, 61 DAF, OR 1/24/2023

Sample ID Matrix: Useable Marijuana

Test ID

Source ID:

Date Sampled: 03/08/23 Date Accepted: 03/08/23

Harvest/Prod. Date: 01.24.2023 (Phylos Bioscience)

Results at a Glance

Total THC : 25.20 %

Total CBD : <LOQ (0.0117% dry) %

Percent Moisture : 9.14 % PASS

Total Terpenes : 1.797 % PASS



Eric Wendt
Chief Science Officer - 4/13/2023



Sweet Tartz License#: 10029074C70

PT6028 GH Trimmed Flower, 61 DAF, OR 1/24/2023

Sample ID: Matrix: Useable Marijuana

Test ID:

Source ID:

Date Sampled: 03/08/23

Date Accepted: 03/08/23

Harvest/Prod. Date: 01.24.2023

(Phylos Bioscience)

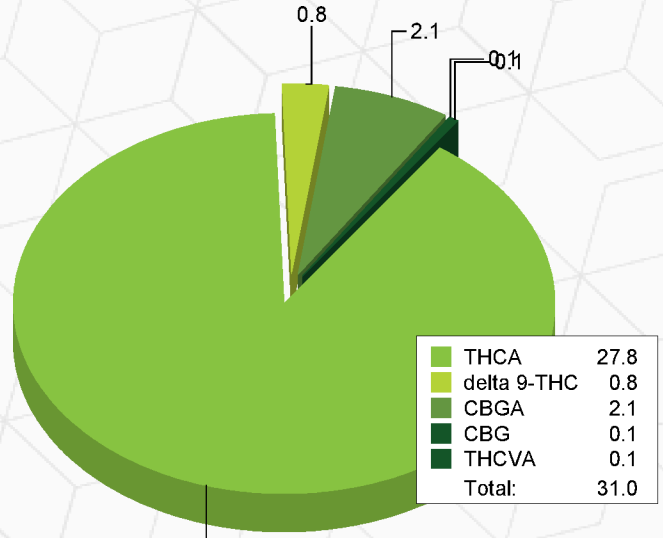
Potency Analysis by HPLC

Date/Time Extracted: 03/10/23 10:25

Analysis Method/SOP: 215

Batch Identification: 2310065

	LOQ (%)	% by Wt.	mg/g	Cannabinoids Profile	
Total THC	0.0521	25.20	252		
Total CBD	0.0117	< LOQ	< LOQ		
THCA	0.0005	27.81	278.1		
delta 9-THC	0.0005	0.8111	8.111		
delta 8-THC	0.0258	< LOQ	< LOQ		
THCV	0.0289	< LOQ	< LOQ		
THCVA	0.0109	0.1290	1.29		
CBD	0.0005	< LOQ	< LOQ		
CBDA	0.0005	< LOQ	< LOQ		
CBDV	0.0286	< LOQ	< LOQ		
CBDVA	0.0094	< LOQ	< LOQ		
CBN	0.0172	< LOQ	< LOQ		
CBG	0.0046	0.0594	0.594		
CBGA	0.0046	2.147	21.47		
CBC	0.0512	< LOQ	< LOQ		
Total Cannabinoids		30.95	309.5		



Moisture

Date/Time Extracted: 03/15/23 10:53

Analysis Method/SOP: 103

Moisture: 9.14 %

Action Level: 15%

Potency results are reported on a dry weight basis.

Total THC = delta 9-THC + (THCA * 0.877)

Total CBD = CBD + (CBDA * 0.877)

Total CBG = CBG + (CBGA * 0.878)

LOQ=Limit of Quantification, the lowest measurable concentration of an analyte.



ISO 17025
ACCREDITED
LABORATORY

Eric Wendt
Chief Science Officer - 4/13/2023

These results relate only to the sample included on this report. The report may not be reproduced except in full, without the written permission of Green Leaf Lab.

This is for informational testing and is not compliance testing. Lab results apply to the sample as received.



Sweet Tartz License#: 10029074C70

PT6028 GH Trimmed Flower, 61 DAF, OR 1/24/2023

Sample ID: Matrix: Useable Marijuana

Test ID:

Source ID:

Date Sampled: 03/08/23

Date Accepted: 03/08/23

Harvest/Prod. Date: 01.24.2023

(Phylos Bioscience)

Terpene Analysis by GCMS

Date/Time Extracted: 03/10/23 10:25

Analysis Method/SOP: 204

Date/Time Analyzed: 03/11/23 02:08

Analyte	Result	LOD	LOQ	Units	Analyte	Result	LOD	LOQ	Units
(-)-Borneol	< LOQ	0.001	0.003	mg/g	(+)-Borneol	< LOQ	0.001	0.003	mg/g
3-Carene	< LOQ	0.001	0.003	mg/g	alpha-Bisabolol	0.03	0.001	0.003	mg/g
alpha-Cedrene	< LOQ	0.001	0.003	mg/g	alpha-Humulene	0.26	0.001	0.003	mg/g
Alpha-Phellandrene	< LOQ	0.001	0.003	mg/g	alpha-Pinene	0.49	0.001	0.003	mg/g
alpha-Terpinene	< LOQ	0.001	0.003	mg/g	alpha-Thujone	< LOQ	0.001	0.003	mg/g
A-Terpineol	< LOQ	0.001	0.003	mg/g	beta-Caryophyllene	1.07	0.001	0.003	mg/g
beta-Myrcene	11.36	0.001	0.003	mg/g	beta-Pinene	0.21	0.001	0.003	mg/g
Camphene	< LOQ	0.001	0.003	mg/g	Camphor	< LOQ	0.001	0.003	mg/g
Carvacrol	< LOQ	0.001	0.003	mg/g	Carvone	< LOQ	0.001	0.003	mg/g
Caryophyllene Oxide	< LOQ	0.001	0.003	mg/g	Cedrol	< LOQ	0.001	0.003	mg/g
Cis-beta-Farnesene	< LOQ	0.001	0.003	mg/g	Cis-beta-Ocimene	< LOQ	0.001	0.003	mg/g
cis-Nerolidol	< LOQ	0.001	0.003	mg/g	Citral	< LOQ	0.001	0.003	mg/g
Citronellol	< LOQ	0.001	0.003	mg/g	Endo-fenchyl alcohol	< LOQ	0.001	0.003	mg/g
Eucalyptol	< LOQ	0.001	0.003	mg/g	Farnesol 1	< LOQ	0.001	0.003	mg/g
Farnesol 2	< LOQ	0.001	0.003	mg/g	gamma-Terpinene	< LOQ	0.001	0.003	mg/g
Geraniol	< LOQ	0.001	0.003	mg/g	Geranyl acetate	< LOQ	0.001	0.003	mg/g
Guaiol	< LOQ	0.001	0.003	mg/g	Isoborneol	< LOQ	0.001	0.003	mg/g
Isobornyl Acetate	< LOQ	0.001	0.003	mg/g	Isopulegol	< LOQ	0.001	0.003	mg/g
Limonene	0.48	0.001	0.003	mg/g	Linalool	0.62	0.001	0.003	mg/g
Menthol	< LOQ	0.001	0.003	mg/g	Menthone	< LOQ	0.001	0.003	mg/g
Nootkatone	< LOQ	0.001	0.003	mg/g	Octyl Acetate	< LOQ	0.001	0.003	mg/g
p-Cymene	< LOQ	0.001	0.003	mg/g	Phytane	< LOQ	0.001	0.003	mg/g
Piperitone	< LOQ	0.001	0.003	mg/g	Pulegone	< LOQ	0.001	0.003	mg/g
Sabinene	< LOQ	0.001	0.003	mg/g	Sabinene hydrate	< LOQ	0.001	0.003	mg/g
Safranal	< LOQ	0.001	0.003	mg/g	Squalene	< LOQ	0.001	0.003	mg/g
Terpinen-4-ol	< LOQ	0.001	0.003	mg/g	Terpinolene	< LOQ	0.001	0.003	mg/g
Thymol	< LOQ	0.001	0.003	mg/g	trans-beta-Farnesene	0.16	0.001	0.003	mg/g
trans-beta-Ocimene	3.29	0.001	0.003	mg/g	trans-Nerolidol	< LOQ	0.001	0.003	mg/g
Valencene	< LOQ	0.001	0.003	mg/g	Verbenone	< LOQ	0.001	0.003	mg/g
Total Terpenes	17.97	0.001	0.003	mg/g					

ND - Compound not detected, <LOQ - Results below the Limit of Quantitation
Terpenes are not Accredited by ORELAP to TNI 2016



Eric Wendt
Chief Science Officer - 4/13/2023



Sweet Tartz License#: 10029074C70

PT6028 GH Trimmed Flower, 61 DAF, OR 1/24/2023

Sample ID: Matrix: Useable Marijuana

Test ID:

Source ID:

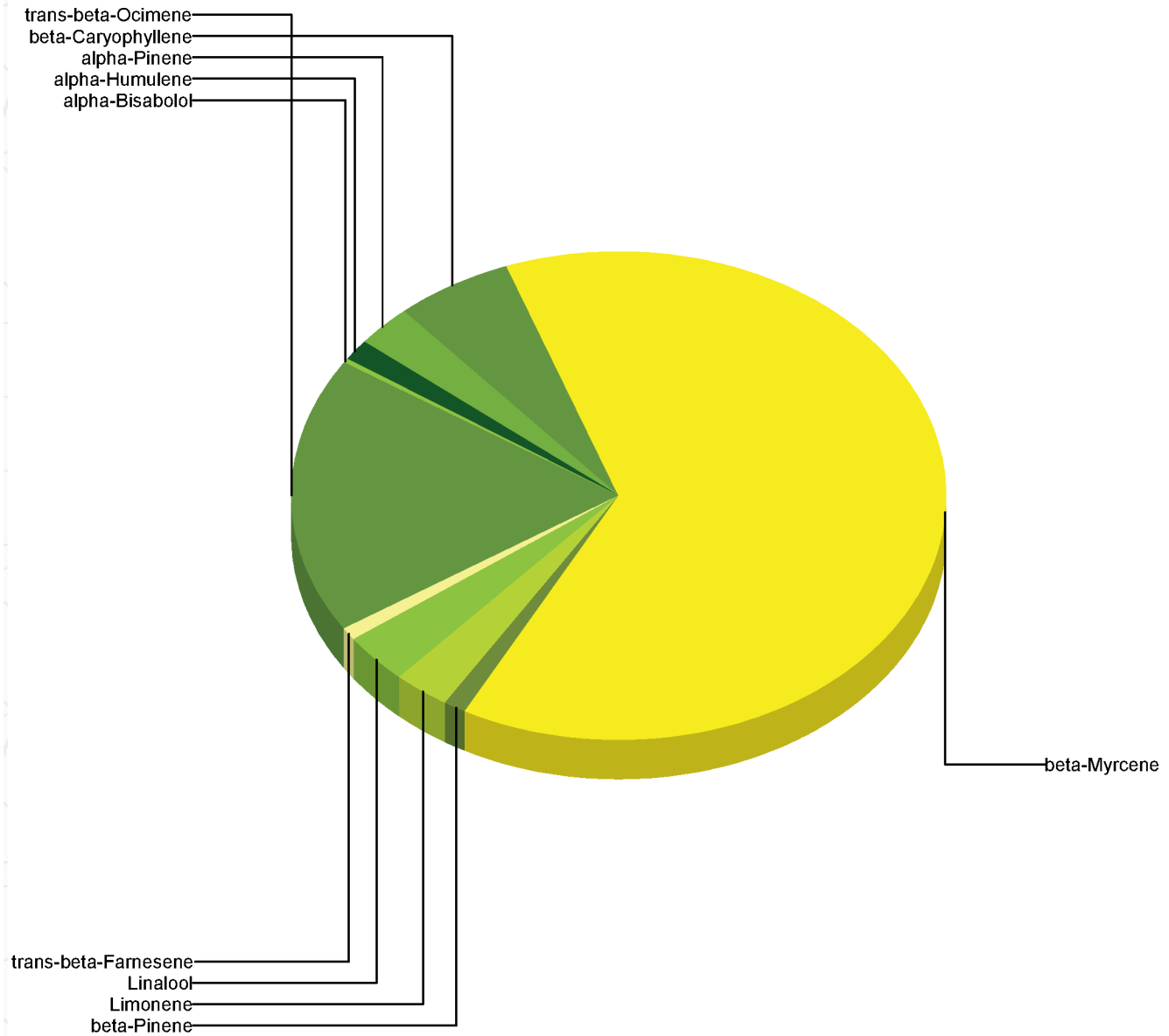
Date Sampled: 03/08/23

Date Accepted: 03/08/23

Harvest/Prod. Date: 01.24.2023

(Phylos Bioscience)

Terpene Profile



Percentage of Total Terpenes Identified



Eric Wendt
Chief Science Officer - 4/13/2023